

# CSE 190: Virtual Reality Technologies

---

LECTURE #5: COLOR VISION



# Announcements

---

Homework project 1 is due next Friday at 2pm

- To be demonstrated in VR lab B210
- One member of each team:  
Upload code to TritonEd by Friday 2pm

# Color Spaces

---

# Color Realism

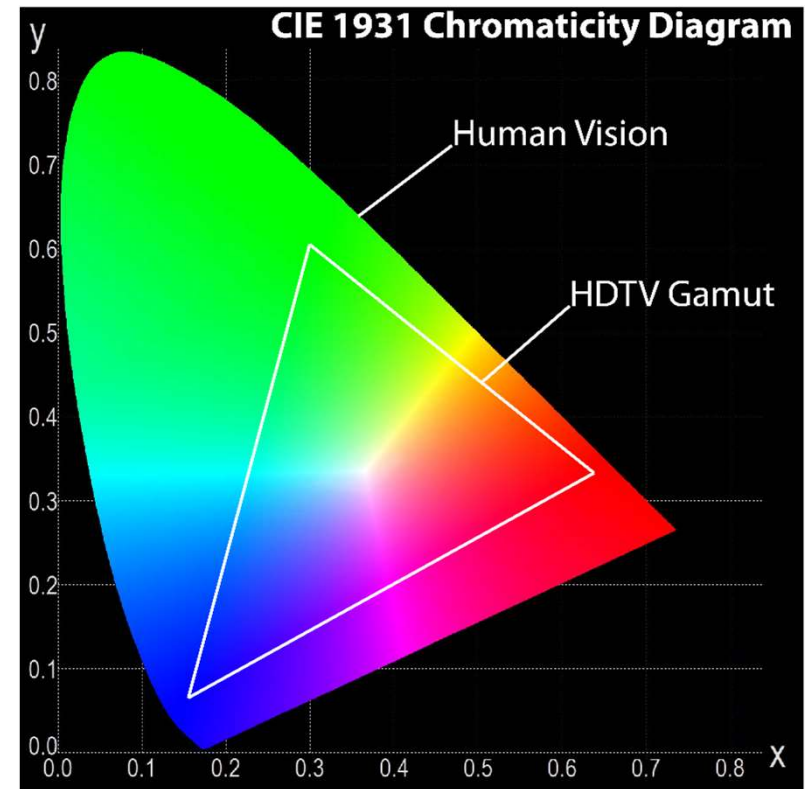
To create compelling virtual worlds we need to render realistic colors.

- Even more important for augmented reality

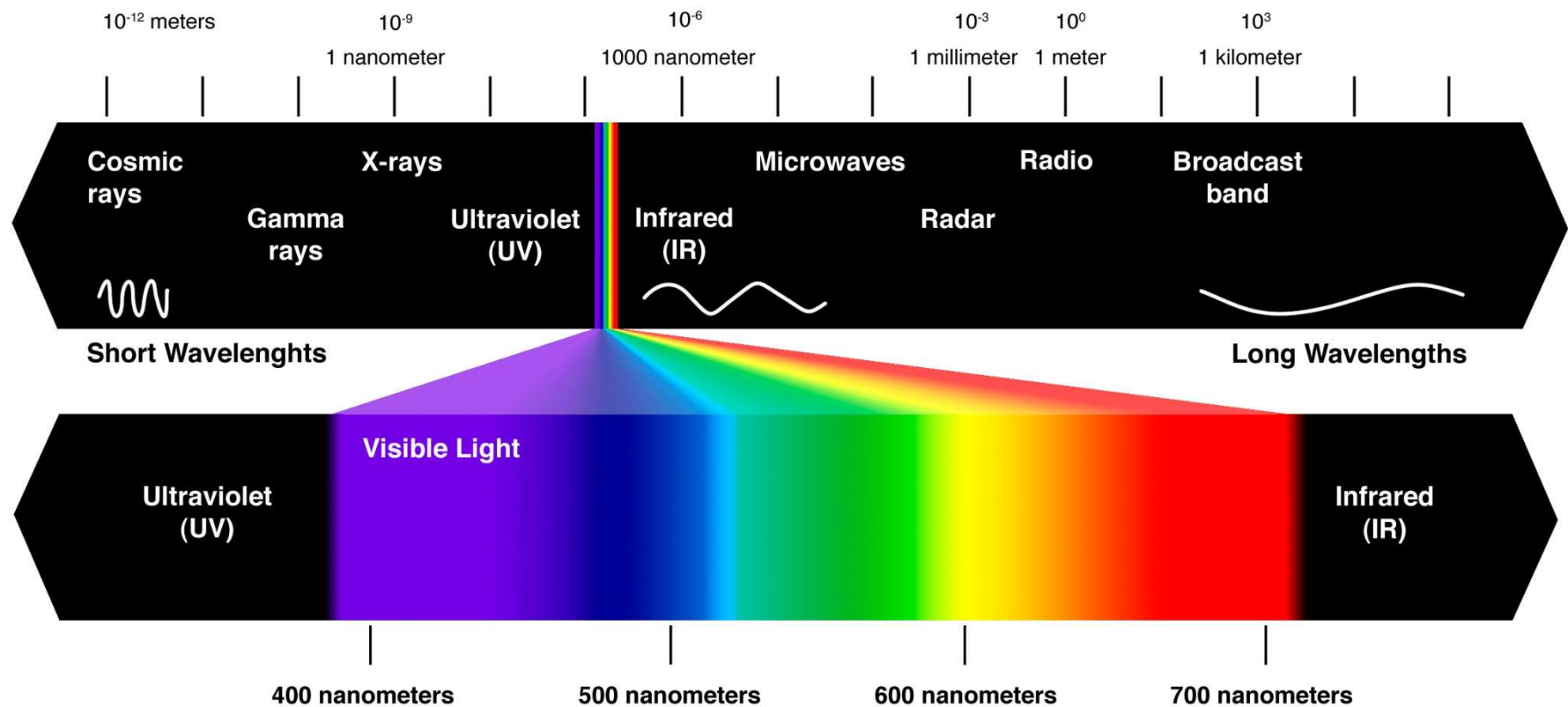
How to measure color realism?

- On right: chromaticity diagram of typical HD TV gamut

Goal: understand chromaticity diagrams



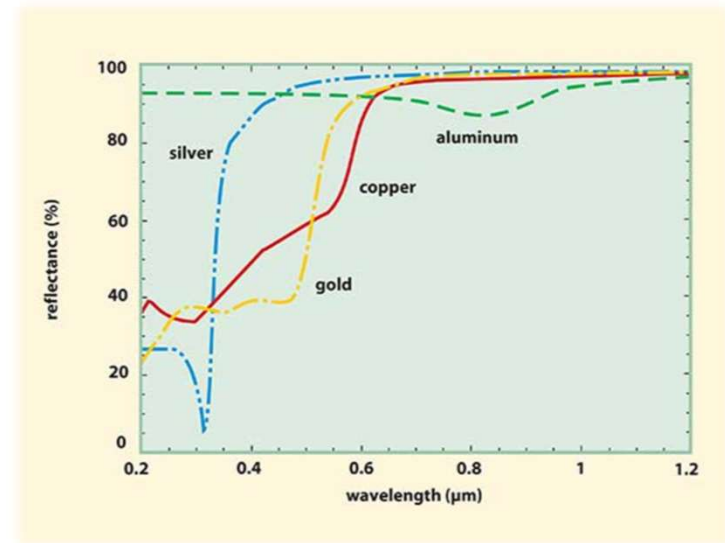
# Color Perception



# Color Reproduction

How can we store and reproduce colors of objects?

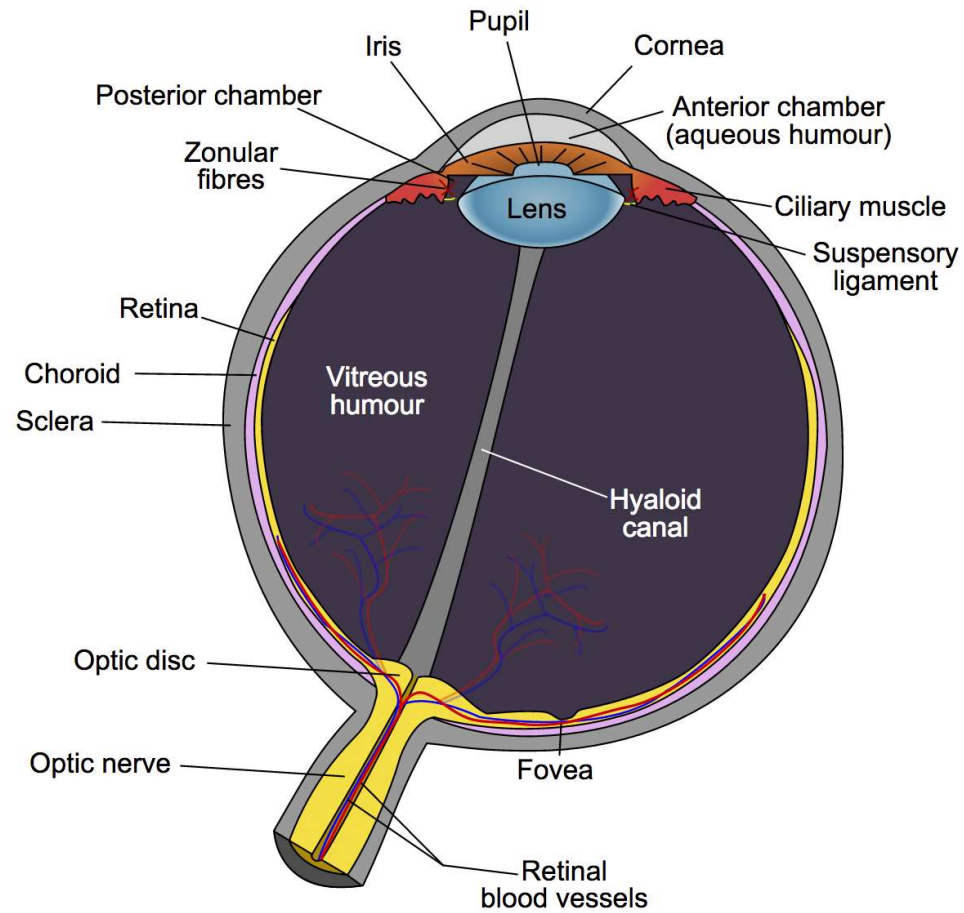
- Naïve approach: store full spectrum



Goal: representation should be as compact as possible

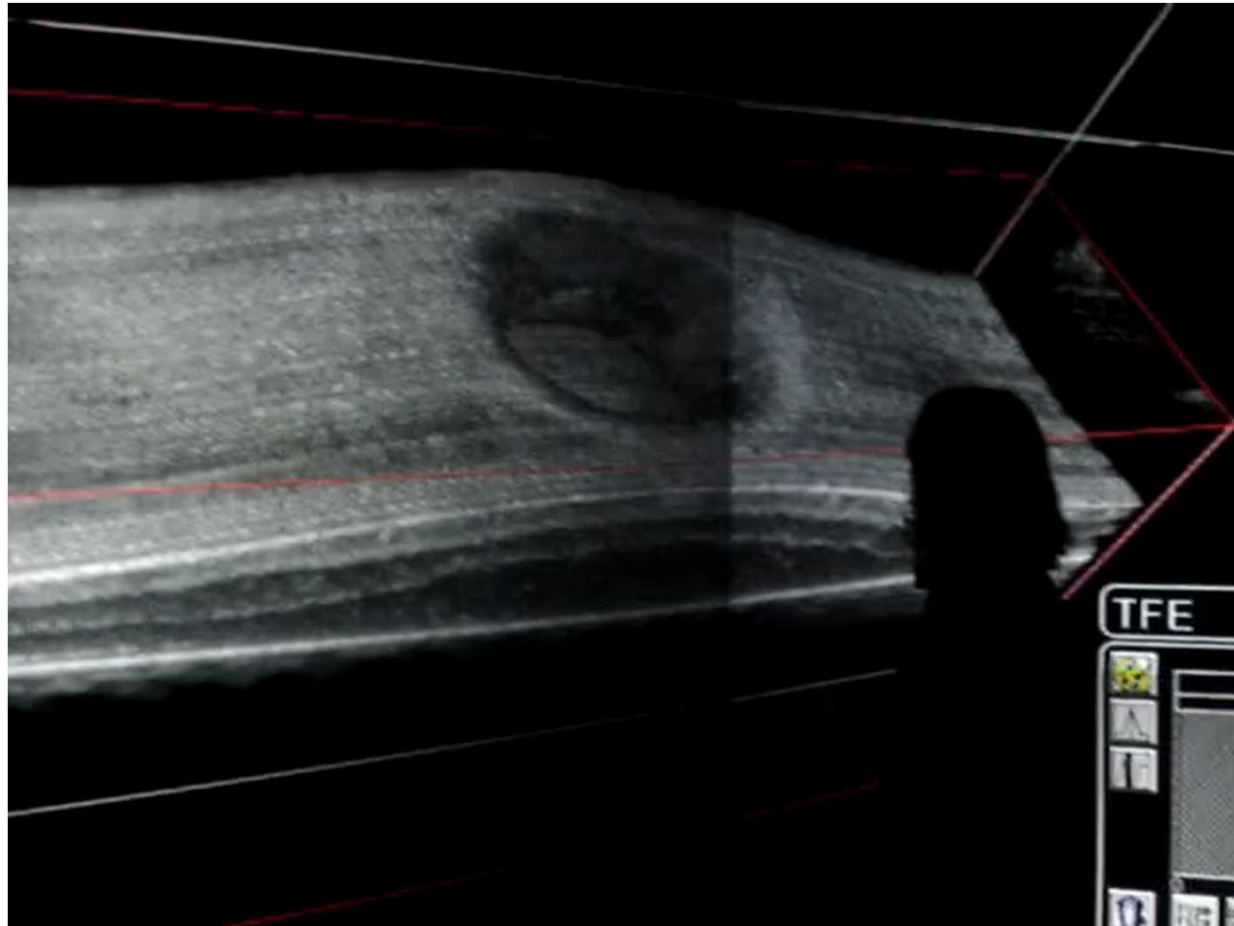
- **Requirement:** any two colors that can be distinguished by humans should have different representations
- **Observation:** any two different colors that cannot be distinguished by humans can have the same representation

# Anatomy of the Human Eye



# Retina Visualization in VR

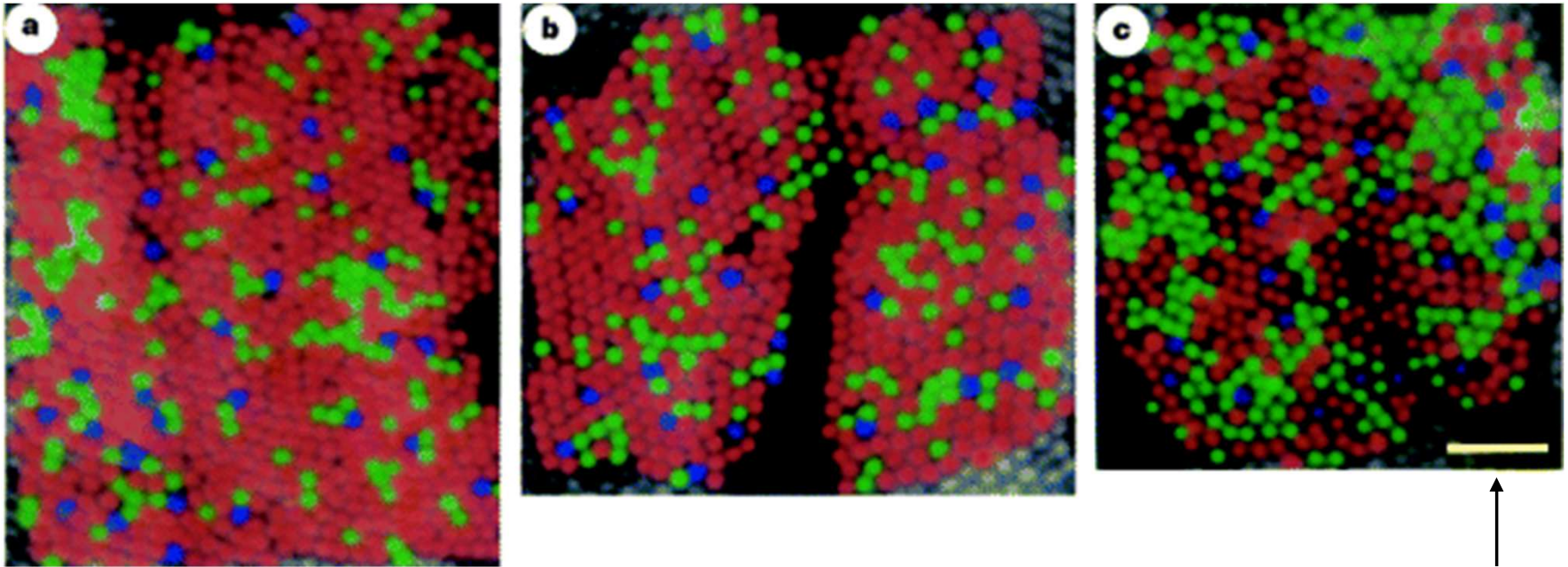
---





# Cones and Rods

Roorda & Williams, 1999, Nature

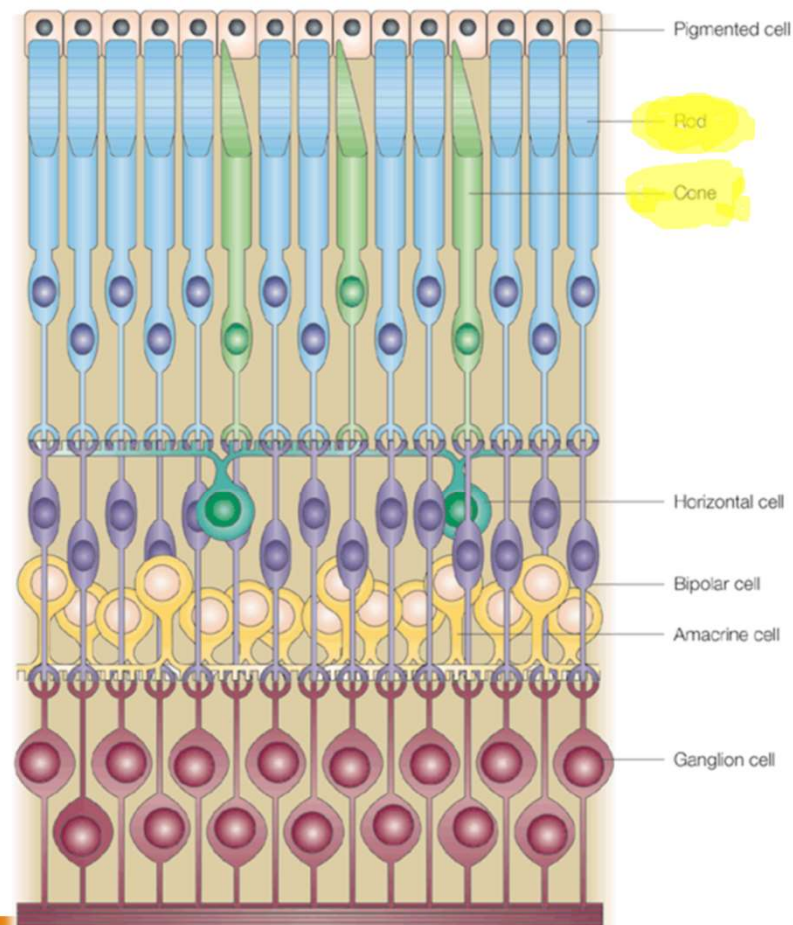


5 arcmin visual angle

Photoreceptors: 3 types of cones (color vision), rods (luminance only, night vision)

# Layers of the Retina

---



# Color Representation

---

Goal: create minimal set of parameters describing a color sensation.

→ “Coordinate system” for colors

Three types of cones (L,M,S)

→ we expect three parameters to be sufficient (Trichromatic Theory!)

Idea: use L,M,S cone responses!

# Tristimulus Experiment

---

Given arbitrary color, we want to know the weights for the three primaries

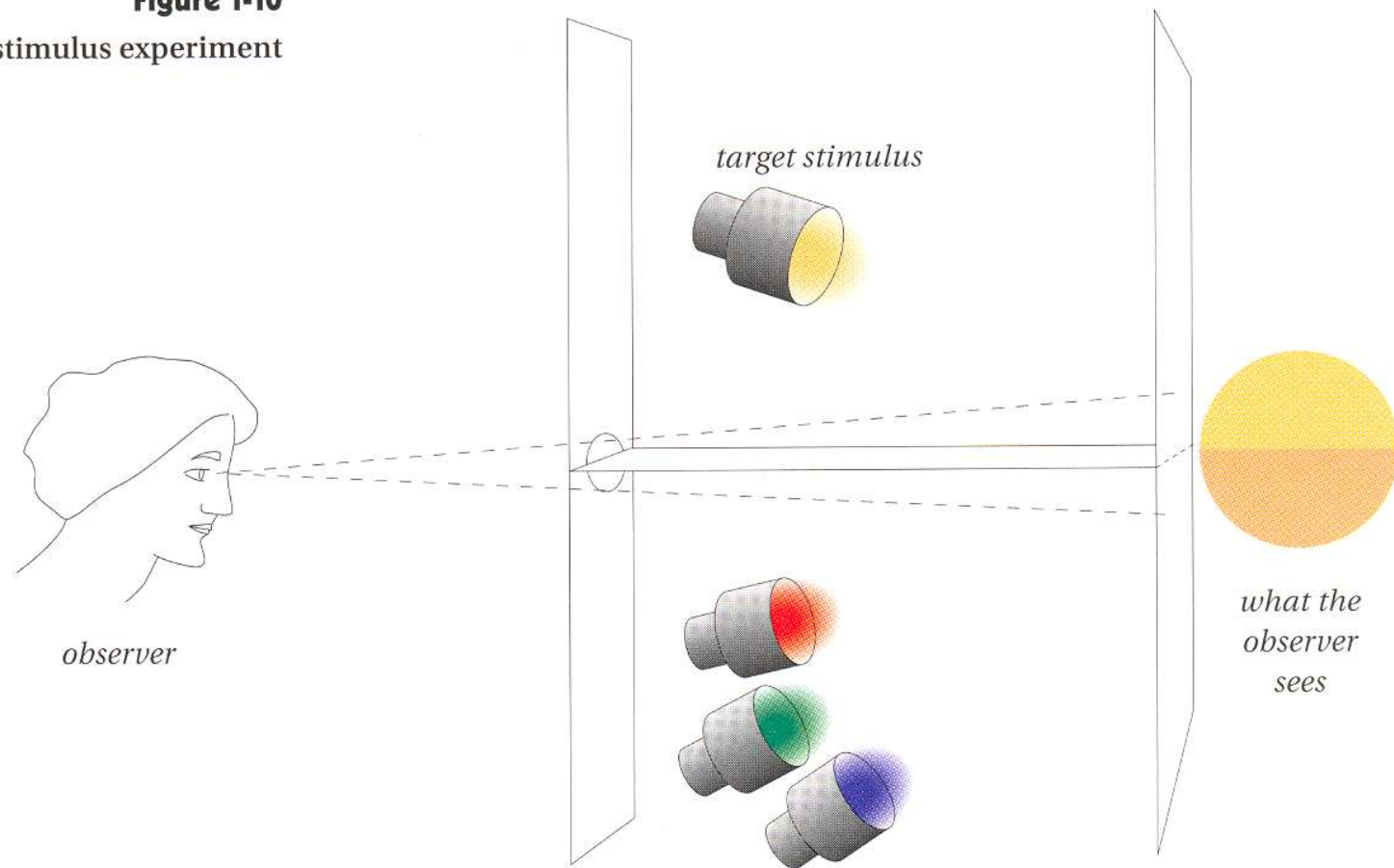
→ tristimulus values

Experimental solution

- First done by CIE (International Commission on Illumination) ca. 1920

# Tristimulus Experiment

**Figure 1-10**  
Tristimulus experiment

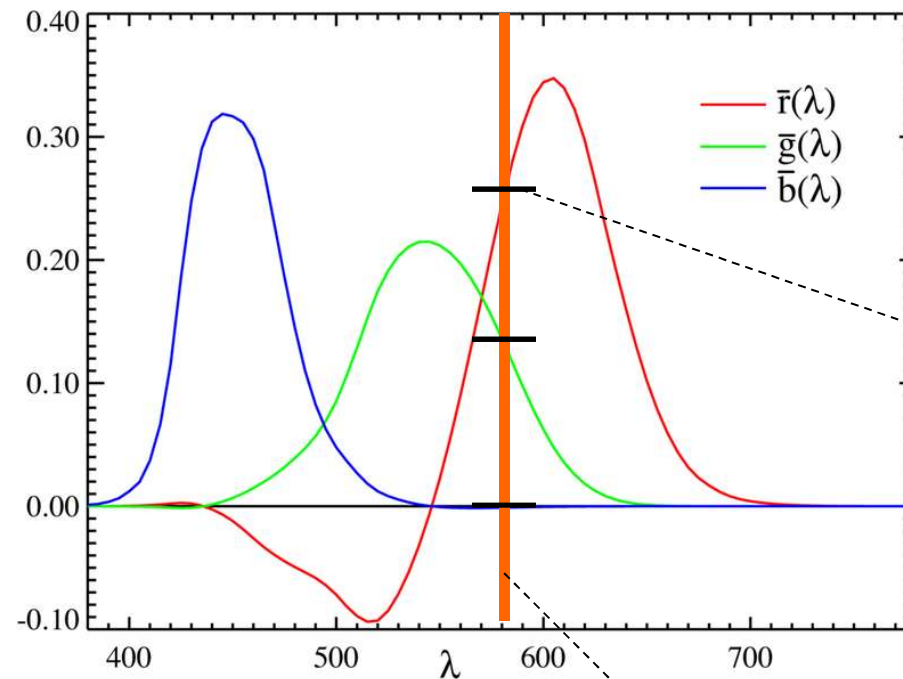


*The observer adjusts the intensities of the red, green, and blue lamps until they match the target stimulus on the split screen.*

# Tristimulus Experiment

Spectral primary colors were chosen as: blue (435.8nm), green (546.1nm), red (700nm)

Example for target color wavelength of 580nm

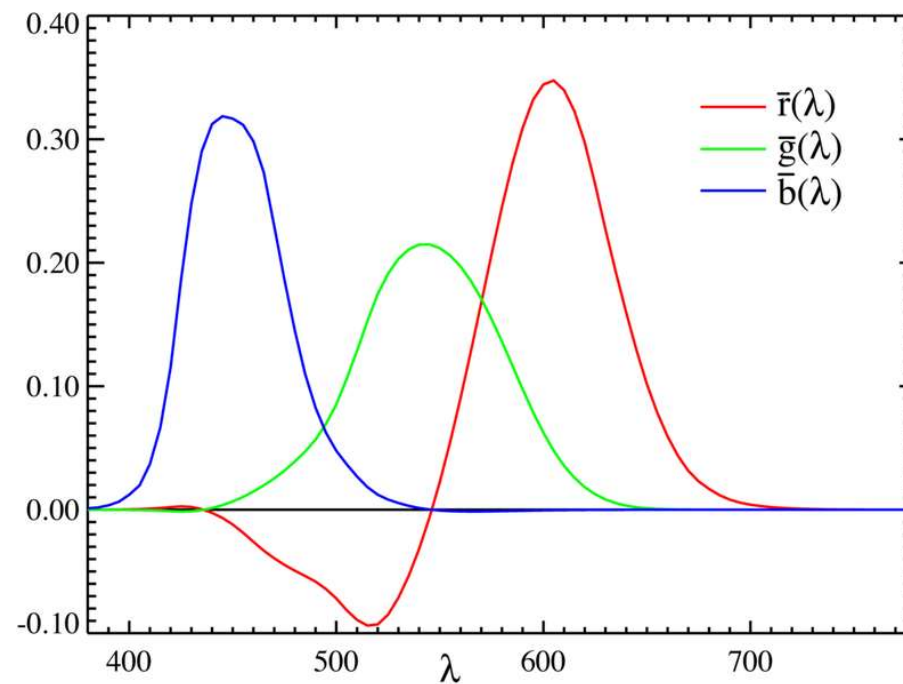


Weight for  
red primary

Target (580nm)

# Tristimulus Experiment

Matching curves for monochromatic target as measured:



**Why negative values?**

# Negative Values

---

Some spectral colors could not be matched by primaries in the experiment

“Trick”

- One primary could be added to the source (stimulus)
- Match with the other two
- Weight of primary added to the source is considered negative



# CIE Color Spaces

---

Matching curves  $\bar{r}(\lambda), \bar{g}(\lambda), \bar{b}(\lambda)$  define CIE RGB color space

- CIE RGB values are color “coordinates”

CIE was not satisfied with range of RGB values for visible colors

Defined CIE XYZ color space

- Most commonly used color space today

# CIE XYZ Color Space

---

Determined coefficients such that

- Y corresponds to an experimentally determined brightness
- No negative values in matching curves
- White is XYZ=(1/3,1/3,1/3)

Conversion from CIE RGB to CIE XYZ:

$$\begin{bmatrix} X \\ Y \\ Z \end{bmatrix} = \frac{1}{b_{21}} \begin{bmatrix} b_{11} & b_{12} & b_{13} \\ b_{21} & b_{22} & b_{23} \\ b_{31} & b_{32} & b_{33} \end{bmatrix} \begin{bmatrix} R \\ G \\ B \end{bmatrix} = \frac{1}{0.17697} \begin{bmatrix} 0.49 & 0.31 & 0.20 \\ 0.17697 & 0.81240 & 0.01063 \\ 0.00 & 0.01 & 0.99 \end{bmatrix} \begin{bmatrix} R \\ G \\ B \end{bmatrix}$$

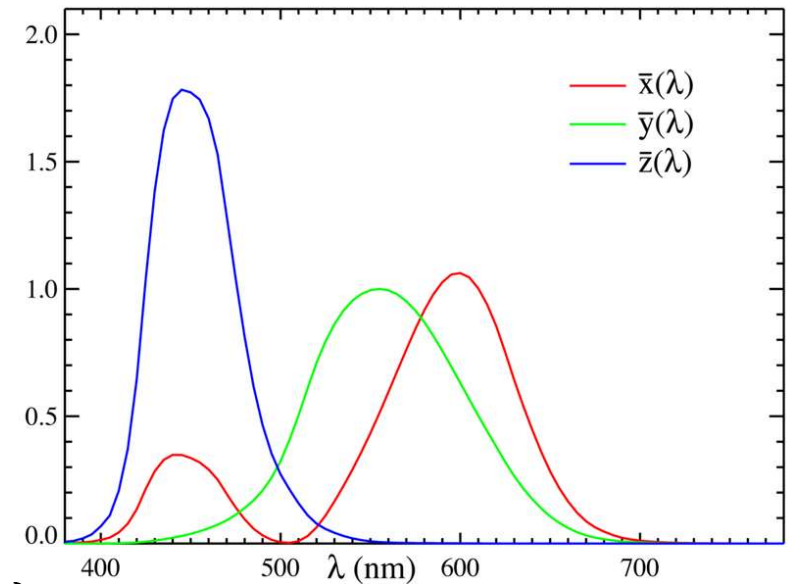
# CIE XYZ Color Space

## Matching curves

No corresponding physical primaries

## Tristimulus values

Always positive!



$$X = \int \bar{x}(\lambda) L(\lambda) d\lambda$$

$$Y = \int \bar{y}(\lambda) L(\lambda) d\lambda$$

$$Z = \int \bar{z}(\lambda) L(\lambda) d\lambda$$

# 3D CIE XYZ Color Space

---

## Visualization

Interpret XYZ as 3D coordinates, plot corresponding color at each point

Many XYZ values are outside of visible color space



# Chromaticity Diagrams

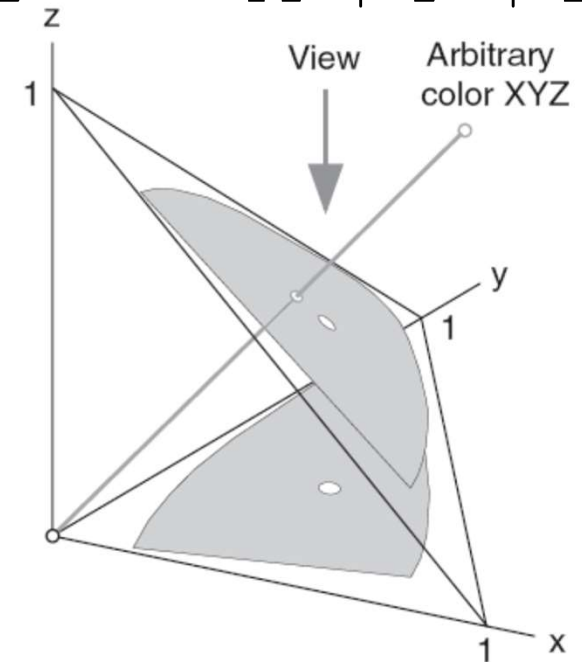
---

# Chromaticity Diagram

Project from CIE XYZ coordinates to 2D for more convenient visualization:

$$x = \frac{X}{X + Y + Z} \quad y = \frac{Y}{X + Y + Z} \quad z = \frac{Z}{X + Y + Z}$$

Drop z-coordinate



# Chromaticity Diagram

---

Factor out luminance (perceived brightness) and chromaticity (hue)

- $x, y$  represent chromaticity of a color

$$x = \frac{X}{X + Y + Z} \quad y = \frac{Y}{X + Y + Z} \quad 0 \leq x, y \leq 1$$

- $Y$  is luminance

CIE  $xyY$  color space

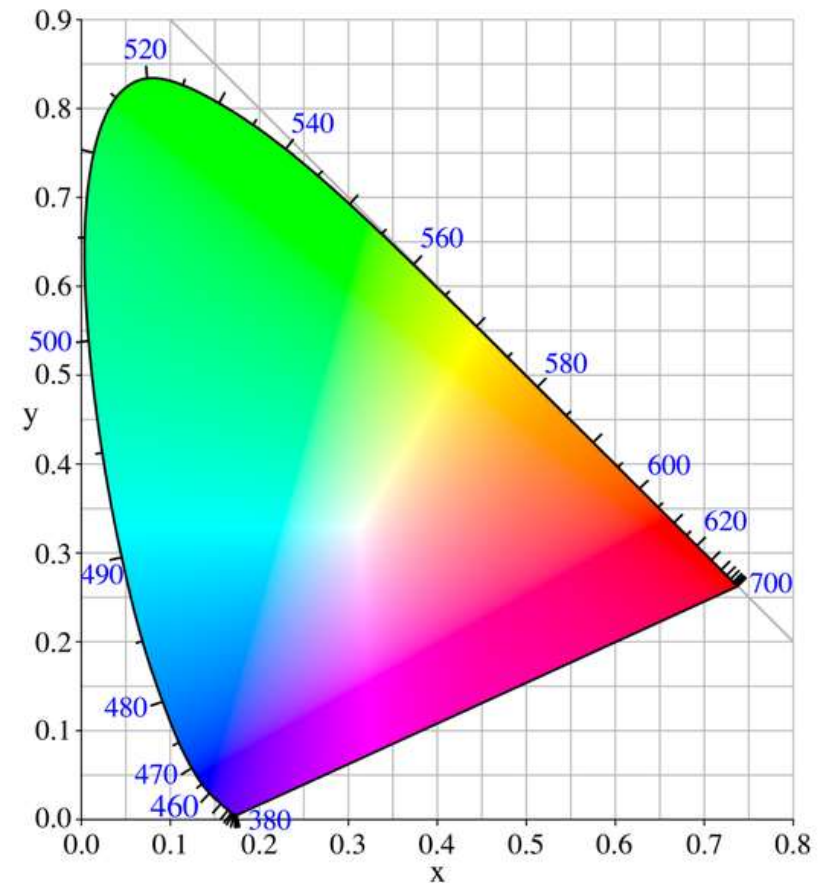
Reconstruct XYZ values from  $xyY$

$$X = \frac{Y}{y}x \quad Z = \frac{Y}{y}(1 - x - y)$$

# Chromaticity Diagram

Visualizes  $x, y$  plane (chromaticities)

Pure spectral colors on boundary

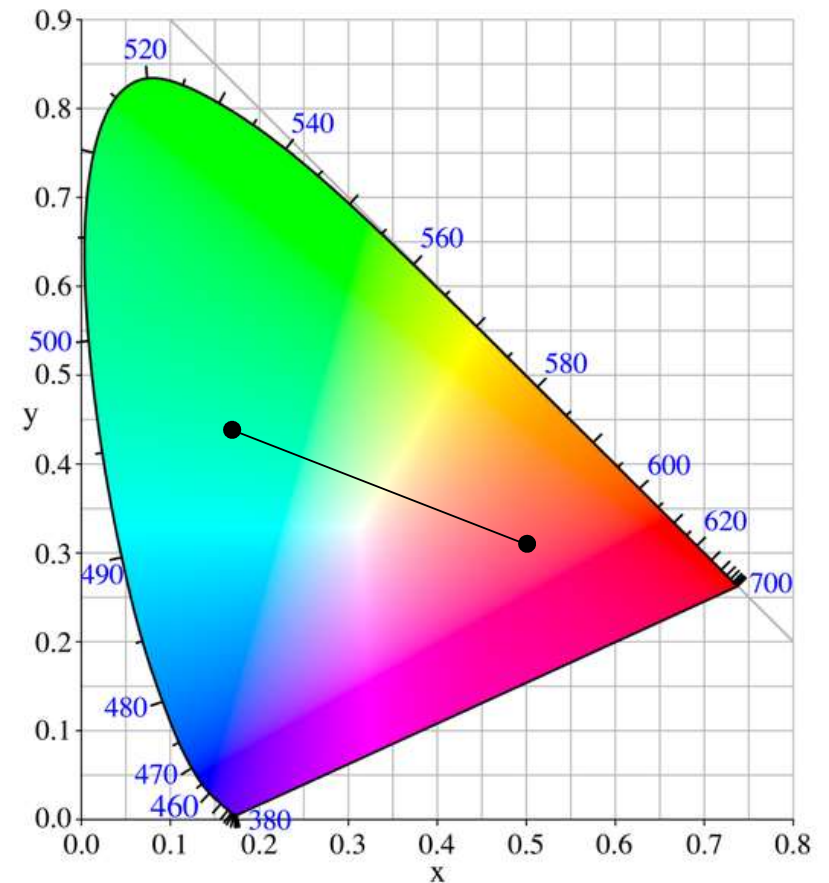


Colors shown do not correspond to colors represented by  $(x, y)$  coordinates!



# Chromaticity Diagram

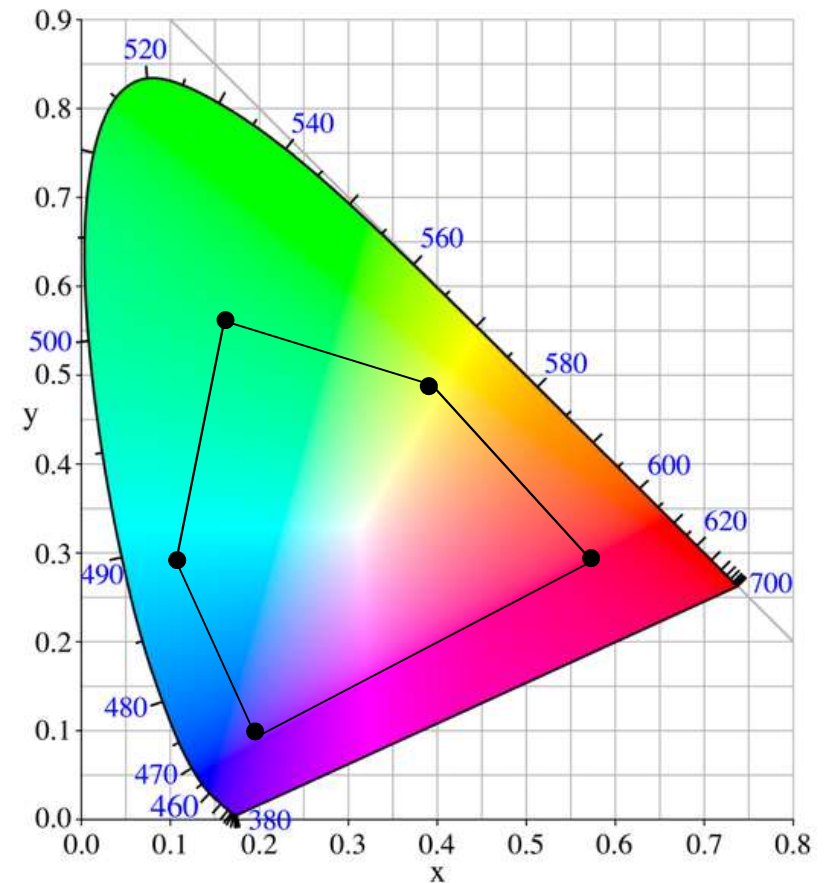
Weighted sum of any two colors lies on line connecting the colors



Colors shown do not correspond to colors represented by (x,y) coordinates!

# Chromaticity Diagram

Weighted sum of any number of colors lies in convex hull of colors (gamut)

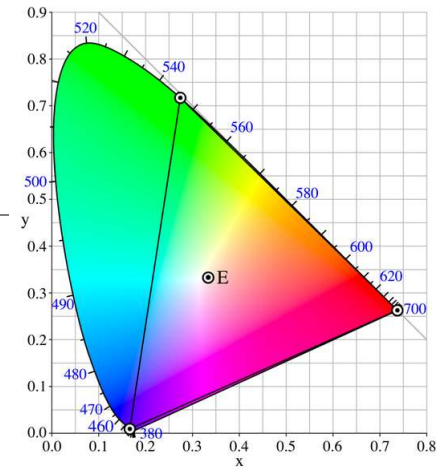


Colors shown do not correspond to colors represented by (x,y) coordinates!

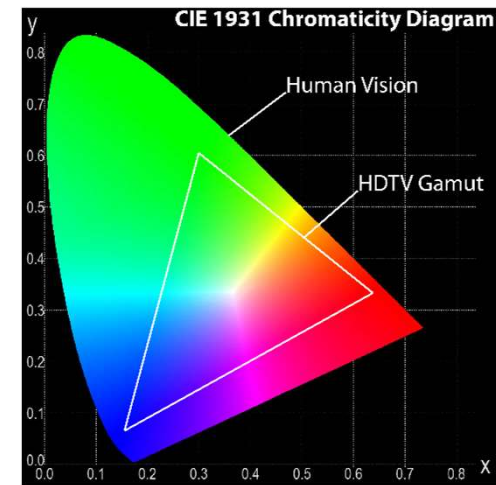
# Color Gamut

Any device based on three primaries can only produce colors within the triangle spanned by the primaries.

Points outside gamut correspond to negative weights of primaries.



Gamut of CIE RGB primaries



Gamut of typical HD TV

# Display Gamut

---

Given red, green, blue (RGB) values, what color will your monitor produce?

- I.e., what are the CIE XYZ or CIE RGB coordinates of the displayed color?
- How are OpenGL RGB values related to CIE XYZ, CIE RGB?

Often you don't know!

# sRGB

---

Standard color space, with fixed conversion to CIE XYZ.

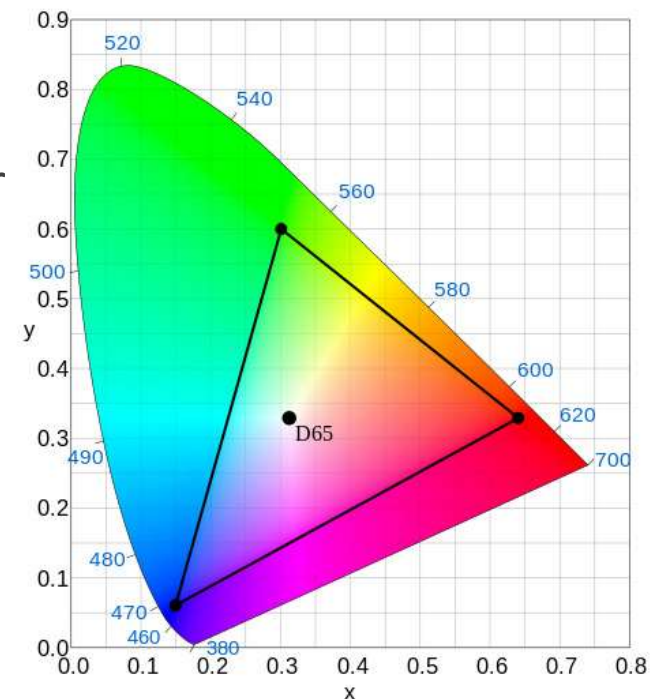
Designed to match RGB values of typical monitor under typical viewing conditions (dimly lit office)

- If no calibration information available, best to interpret RGB values as sRGB

sRGB roughly corresponds to 2.2 gamma correction.

sRGB is supported by OpenGL as

- sRGB framebuffers (since OpenGL 3.0)



sRGB color gamut

# Color Calibration

---

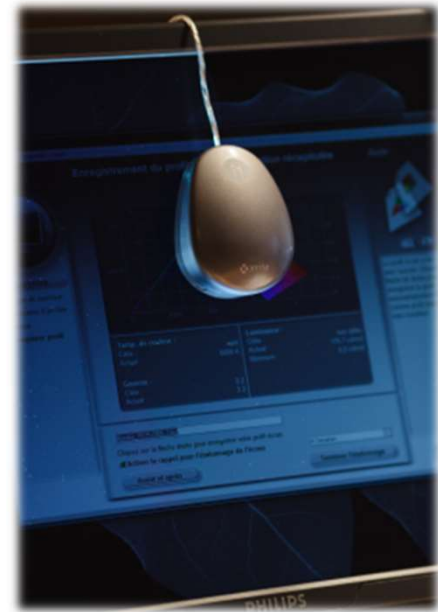
The same RGB values on one monitor will look different than on another

→ Color calibration

Standard for digital publishing, printing, photography.

Will become critical for photo-realistic AR.

But: not important to most consumers as long as colors on screen do not have to match any others.



Display calibration