

CSE 167:  
Introduction to Computer Graphics  
Lecture #7: GLSL

Jürgen P. Schulze, Ph.D.  
University of California, San Diego  
Spring Quarter 2016

# Announcements

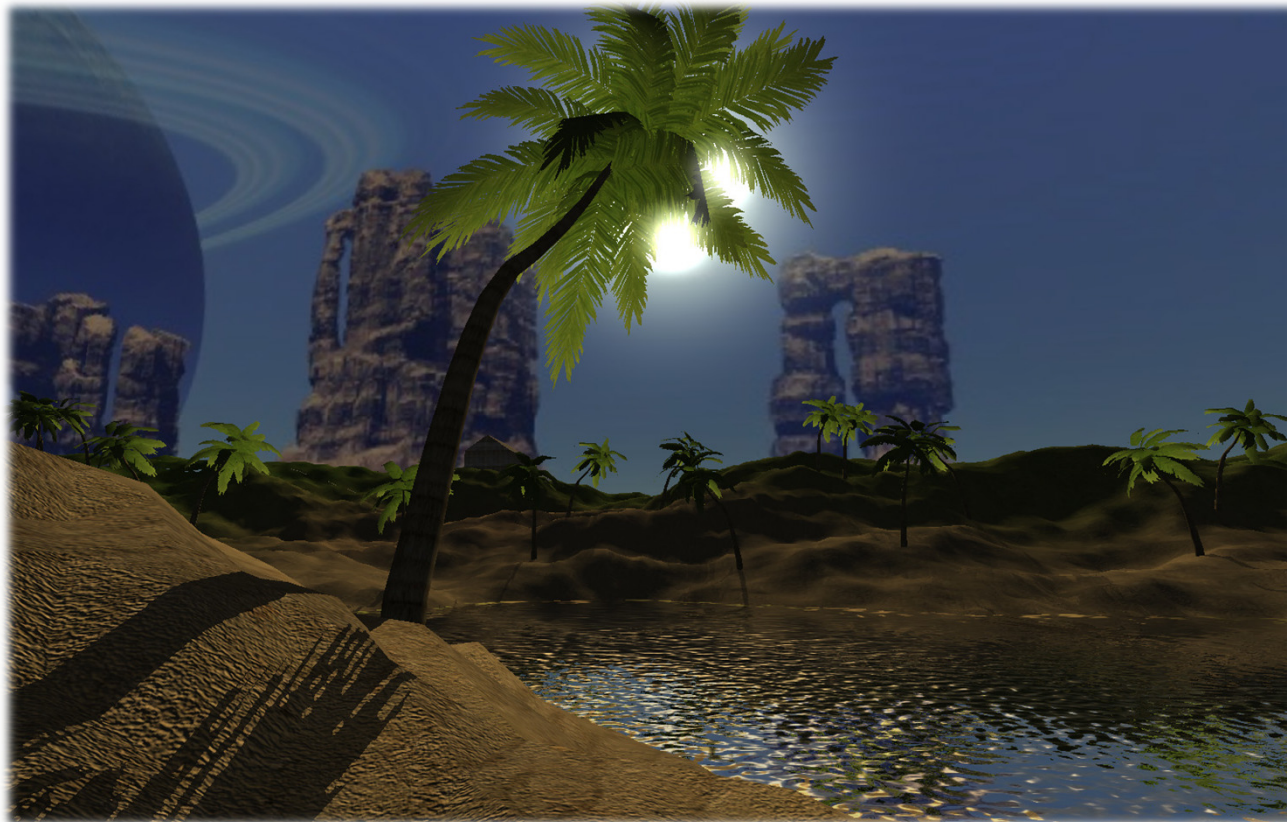
---

- ▶ Project 2 due Friday 4/22 at 2pm
- ▶ Midterm #1 on Tuesday, April 26

# GLSL in Practice

---

- ▶ Real Time 3D Demo C++/OpenGL/GLSL Engine  
<http://www.youtube.com/watch?v=9N-kgCqy2xs>



# Lecture Overview

---

- ▶ **Programmable Shaders**
  - ▶ Vertex Programs
  - ▶ Fragment Programs
  - ▶ GLSL

# Programmable Shaders in OpenGL

---

- ▶ Initially, OpenGL only had a fixed-function pipeline for shading
- ▶ Programmers wanted more flexibility, similar to programmable shaders in raytracing software (term “shader” first introduced by Pixar in 1988)
- ▶ First shading languages came out in 2002:
  - ▶ **Cg** (C for Graphics, created by Nvidia)
  - ▶ **HLSL** (High Level Shader Language, created by Microsoft)
- ▶ They supported:
  - ▶ **Vertex shaders**: allowed modification of geometry
  - ▶ **Fragment shaders**: allowed per-pixel shading

# Programmable Shaders in OpenGL

---

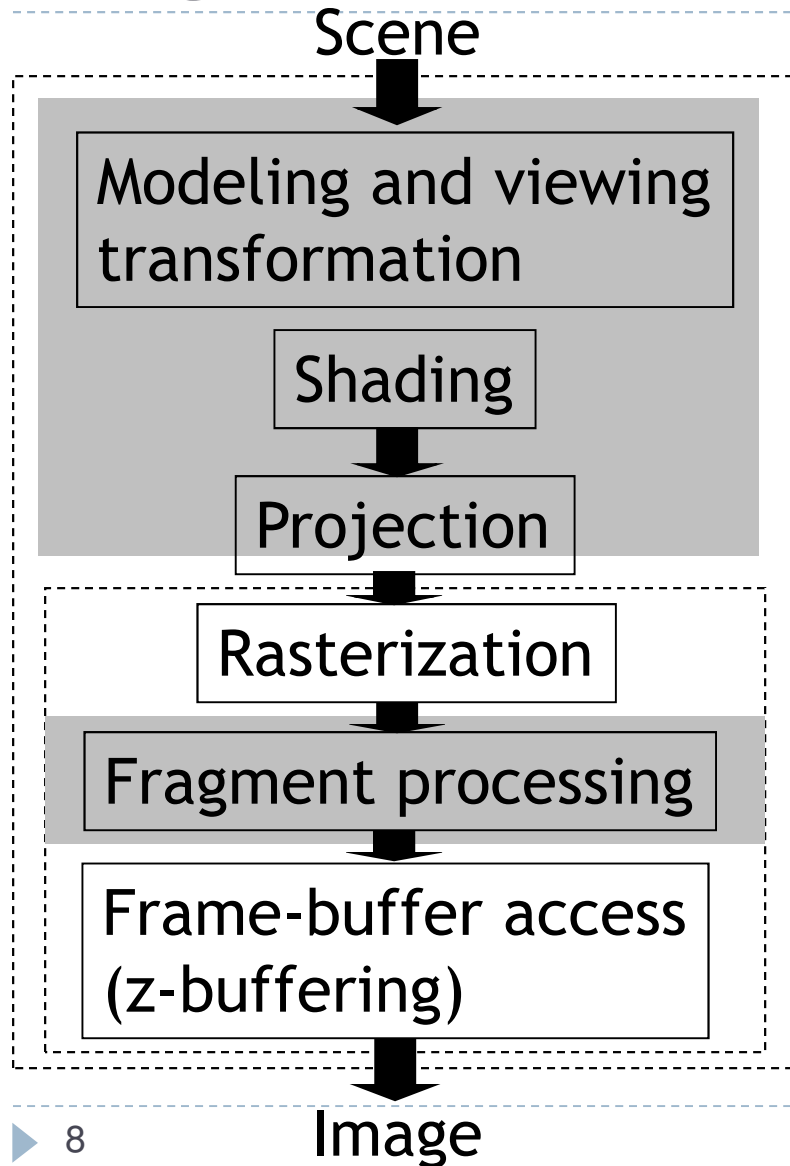
- ▶ OpenGL 2.0 supported the OpenGL Shading Language (GLSL) in 2003
- ▶ OpenGL 3.0 (2011) deprecates fixed rendering pipeline and immediate mode
- ▶ **Geometry shaders** were added in OpenGL 3.2
- ▶ **Tessellation shaders** were added in OpenGL 4.0
- ▶ **Compute shaders** were added in OpenGL 4.2
- ▶ Programmable shaders allow real-time:  
Shadows, environment mapping, per-pixel lighting, bump mapping, parallax bump mapping, HDR, etc.

# Shader Programs

---

- ▶ Programmable shaders consist of shader programs
- ▶ Written in a **shading language**
  - ▶ Syntax similar to C language
- ▶ Each shader is a separate piece of code in a separate ASCII text file
- ▶ Shader types:
  - ▶ Vertex shader
  - ▶ Tessellation shader
  - ▶ Geometry shader
  - ▶ Fragment shader (a.k.a. pixel shader)
- ▶ The programmer can provide any number of shader types to work together to achieve a certain effect
- ▶ If a shader type is not provided, OpenGL's fixed-function pipeline is used

# Programmable Pipeline



- ▶ Executed once per vertex:
  - ▶ Vertex Shader
  - ▶ Tessellation Shader
  - ▶ Geometry Shader

- ▶ Executed once per fragment:
  - ▶ Fragment Shader



# Vertex Shader

---

- ▶ Executed once per vertex
- ▶ Cannot create or remove vertices
- ▶ Does not know the primitive it belongs to
- ▶ Replaces functionality for
  - ▶ Model-view, projection transformation
  - ▶ Per-vertex shading
- ▶ If you use a vertex program, you need to implement behavior for the above functionality in the program!
- ▶ Typically used for:
  - ▶ Character animation
  - ▶ Particle systems

# Tessellation Shader

---

- ▶ Executed once per primitive (triangle, quad, etc.)
- ▶ Generates new primitives by subdividing each line, triangle or quad primitive
- ▶ Typically used for adapting visual quality to the required level of detail → recursive subdivision
  - ▶ For instance, for automatic tessellation of Bezier curves and surfaces

# Geometry Shader

---

- ▶ Executed once per primitive (triangle, quad, etc.)
- ▶ Can create new graphics primitives from output of tessellation shader (e.g., points, lines, triangles)
  - ▶ Or it can remove the primitive
- ▶ Typically used for:
  - ▶ Per-face normal computation
  - ▶ Easy wireframe rendering
  - ▶ Point sprite generation: turn OpenGL points into geometry
  - ▶ Shadow volume extrusion
  - ▶ Single pass rendering to a cubic shadow map
  - ▶ Marching cubes for iso-surfaces
  - ▶ Automatic mesh complexity modification

# Fragment Shader

---

- ▶ A.k.a. Pixel Shader
- ▶ Executed once per fragment
- ▶ Cannot access other pixels or vertices
  - ▶ Makes execution highly parallelizable
- ▶ Computes color, opacity, z-value, texture coordinates
- ▶ Typically used for:
  - ▶ Per-pixel shading (e.g., Phong shading)
  - ▶ Advanced texturing
  - ▶ Bump mapping
  - ▶ Shadows

# Compute Shader

---

- ▶ Not part of the graphics pipeline
- ▶ Have no user-defined inputs and no outputs
- ▶ Results written to an image or shader storage block
- ▶ More info:
  - ▶ [https://www.opengl.org/wiki/Compute\\_Shader](https://www.opengl.org/wiki/Compute_Shader)

# GLSL Data Types

---

- ▶ **float**
  - ▶ vec2, vec3, vec4: floating point vector in 2D, 3D, 4D
  - ▶ mat2, mat3, mat4: 2x2, 3x3, 4x4 floating point matrix
- ▶ **int**
  - ▶ ivec2, ivec3, ivec4: integer vector
- ▶ **bool**
  - ▶ bvec2, bvec3, bvec4: boolean vector
- ▶ **sampler: represent textures**
  - ▶ sampler1D, sampler2D, sampler3D: 1D, 2D and 3D texture
  - ▶ samplerCube: Cube Map texture
  - ▶ sampler1Dshadow, sampler2Dshadow: 1D and 2D depth-component texture

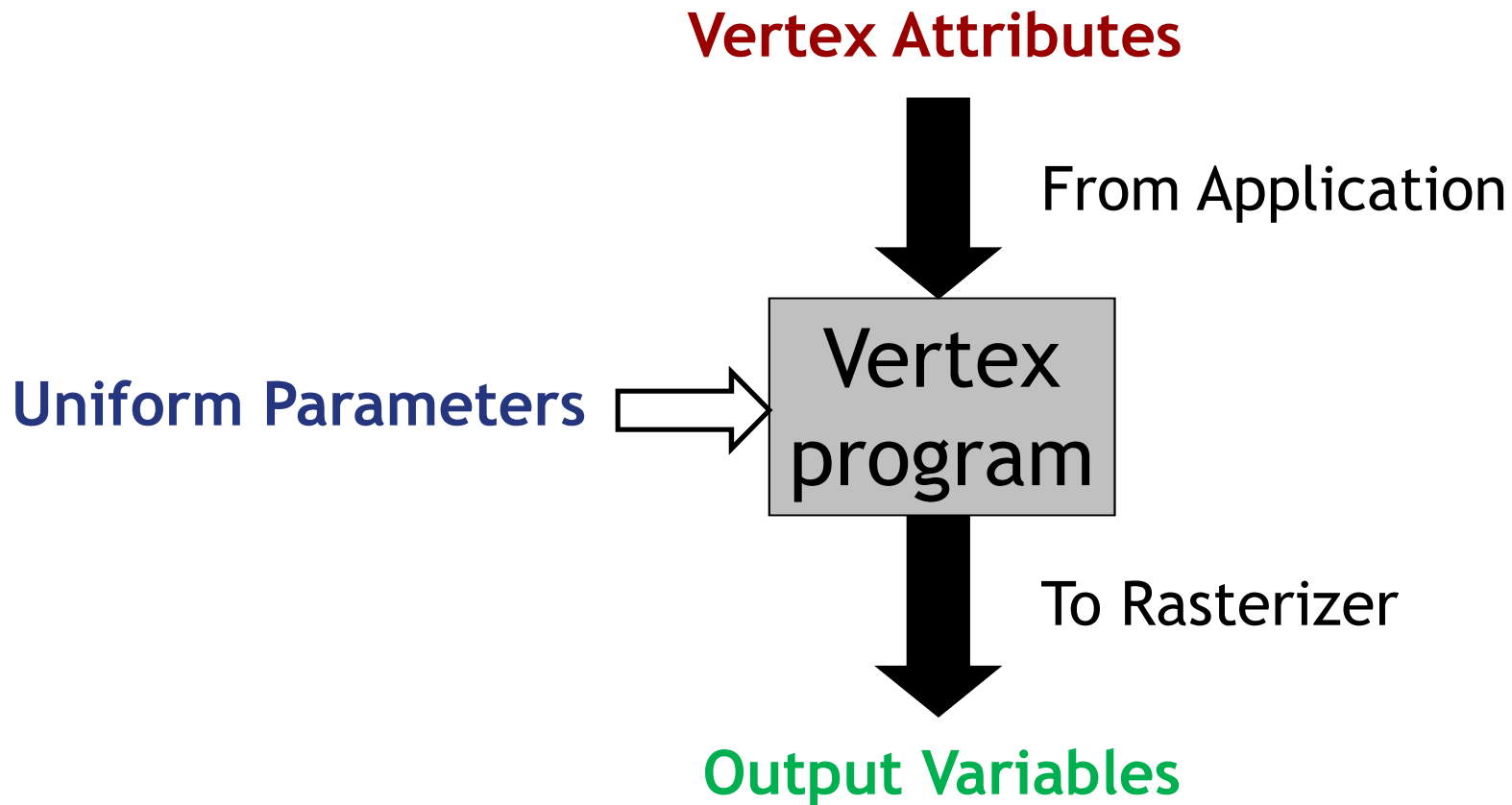
# Lecture Overview

---

- ▶ Programmable Shaders
  - ▶ **Vertex Programs**
  - ▶ Fragment Programs
  - ▶ GLSL

# Vertex Programs

---





# Vertex Attributes

---

- ▶ Declared using the `attribute` storage classifier
- ▶ Different for each execution of the vertex program
- ▶ Can be modified by the vertex program
- ▶ Example:
  - ▶ `attribute float myAttrib;`

# Uniform Parameters

---

- ▶ Declared by `uniform` storage classifier
- ▶ Normally the same for all vertices
- ▶ Read-only

# Uniform Parameters

---

- ▶ Set by the application
- ▶ Should not be changed frequently
  - ▶ Especially not on a per-vertex basis!
- ▶ To access, use `glGetUniformLocation`, `glUniform*` in application
- ▶ Example:
  - ▶ In shader declare  
`uniform float a;`
  - ▶ Set value of `a` in application:  
`GLuint p = ...; // handle of shader program`
  - ▶ `GLint i = glGetUniformLocation(p, "a");`  
`// returns location of a`
  - ▶ `glUniform1f(i, 1.0f); // set value of a to 1`

# Vertex Programs: Output Variables

---

- ▶ Required output: homogeneous vertex coordinates

```
vec4 gl_Position
```

- ▶ **varying** output variables

- ▶ Mechanism to send data to the fragment shader

- ▶ Will be interpolated during rasterization

- ▶ Fragment shader gets interpolated data

- ▶ User-defined `varying` output variables, e.g.:

```
varying vec4 vertex_color;
```

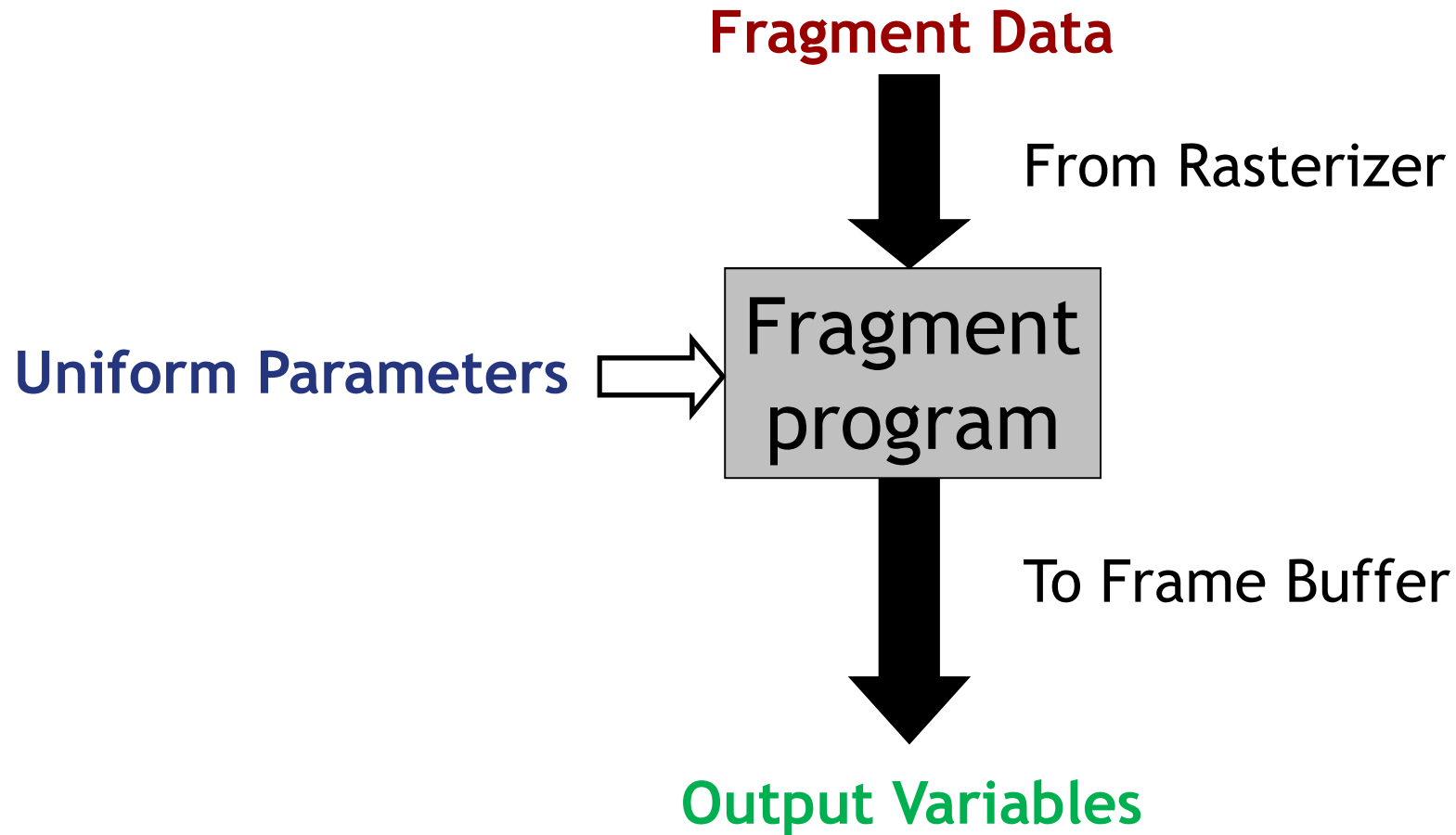
# Lecture Overview

---

- ▶ Programmable Shaders
  - ▶ Vertex Programs
  - ▶ **Fragment Programs**
  - ▶ GLSL

# Fragment Programs

---



# Fragment Data

---

- ▶ Changes for each execution of the fragment program
- ▶ Fragment data includes:
  - ▶ Interpolated standard OpenGL variables for fragment shader, as generated by vertex shader, for example:

```
varying vec4 gl_Color;  
varying vec4 gl_TexCoord[];
```
  - ▶ **Interpolated `varying` variables from vertex shader**
    - ▶ Allows data to be passed from vertex to fragment shader

# Uniform Parameters

---

- ▶ Same as in vertex programs



# Output Variables

---

- ▶ **Pre-defined output variables:**
  - ▶ `vec4 gl_FragColor`
  - ▶ `float gl_FragDepth`
- ▶ **OpenGL writes these to the frame buffer**

# Built-In GLSL Functions

---

- ▶ dot: dot product
- ▶ cross: cross product
- ▶ texture2D: used to sample a texture
- ▶ normalize: normalize a vector
- ▶ clamp: clamping a vector to a minimum and a maximum

# Simple GLSL Shader

---

## Vertex Shader: vertex.glsl

```
in vec3 vPosition;

void main()
{
    gl_Position = vec4(vPosition,1.0);
}
```

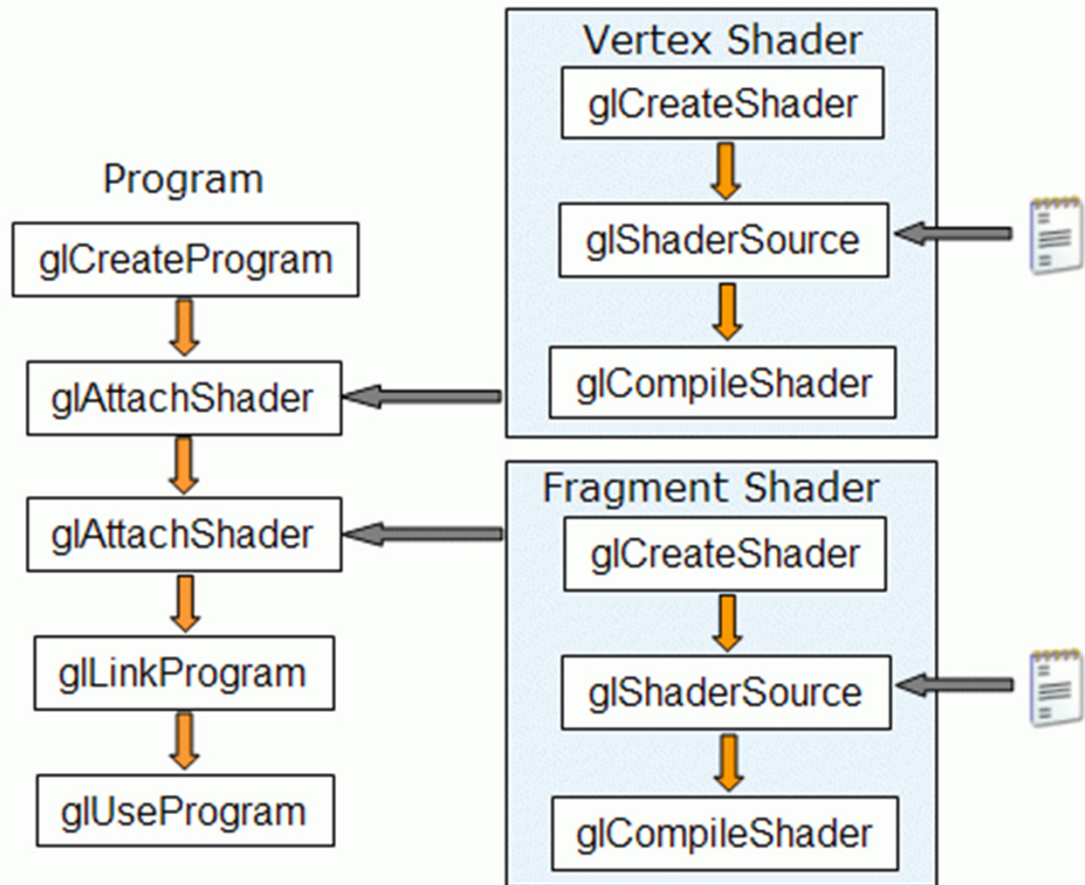
## Fragment Shader: fragment.glsl

```
out vec4 color;

void main()
{
    color = vec4(1.0,1.0,1.0,1.0);
}
```

Source: <http://www.codeincodeblock.com/2013/05/introduction-to-modern-opengl-3x-with.html>

# Loading Shaders in OpenGL



Gabriel Zachmann, Clausthal University

# Loading a Shader

---

```
GLuint loadShader(char *shaderFile, GLenum type)
{
    std::ifstream in(shaderFile);
    std::string src= "";
    std::string line="";
    while(std::getline(in,line))
        src += line + "\n";
    std::cout << src;
    GLuint shader;
    GLint compiled;
    shader = glCreateShader(type);

    const char* source = src.c_str();
    glShaderSource(shader,1,&source,NULL);
    glCompileShader(shader);
    if(!shader)
    {
        std::cerr << "Could not compile the shader";
        return 0;
    }
    return shader;
}
```

# Create Shader Program

---

```
GLuint createShaderProgram()
{
    GLuint vertexShader, fragmentShader;
    GLint linked;

    vertexShader = loadShader("vertex.glsl", GL_VERTEX_SHADER);
    fragmentShader = loadShader("fragment.glsl", GL_FRAGMENT_SHADER);
    if(!vertexShader || !fragmentShader) return 0;

    programId=glCreateProgram();
    if(!programId)
    {
        std::cerr << "could not create the shader program";
        return 0;
    }
    glAttachShader(programId, vertexShader);
    glAttachShader(programId, fragmentShader);

    glBindAttribLocation(programId, 0, "vPosition");
    glLinkProgram(programId);
    glGetProgramiv(programId, GL_LINK_STATUS, &linked);
    if(!linked)
    {
        std::cerr << "could not link the shader";
        return 0;
    }
    glUseProgram(programId);

    return programId;
}
```

# Load a Triangle

---

```
static void LoadTriangle()
{
    // make and bind the VAO
    glGenVertexArrays(1, &gVAO);
    glBindVertexArray(gVAO);

    // make and bind the VBO
    glGenBuffers(1, &gVBO);
    glBindBuffer(GL_ARRAY_BUFFER, gVBO);

    // Put the three triangle vertices into the VBO
    GLfloat vertexData[] = {
        // X      Y      Z
        0.0f, 0.8f, 0.0f,
        -0.8f, -0.8f, 0.0f,
        0.8f, -0.8f, 0.0f,
    };
    glBufferData(GL_ARRAY_BUFFER, sizeof(vertexData), vertexData, GL_STATIC_DRAW);
    glEnableVertexAttribArray(0);
    glVertexAttribPointer(0, 3, GL_FLOAT, GL_FALSE, 0, NULL);

    // unbind the VBO and VAO
    glBindBuffer(GL_ARRAY_BUFFER, 0);
    glBindVertexArray(0);
}
```

# Render

---

```
// draws a single frame
static void Render(GLFWwindow* MainWindow)
{
    // clear everything
    glClearColor(0, 0, 0, 1); // black
    glClear(GL_COLOR_BUFFER_BIT);
    // bind the VAO (the triangle)
    glBindVertexArray(gVAO);
    // draw the VAO
    glDrawArrays(GL_TRIANGLES, 0, 3);
    // unbind the VAO
    glBindVertexArray(0);
    // swap the display buffers
    glfwSwapBuffers(MainWindow);
}
```



# Initialize OpenGL Window

---

```
// initialize GLFW
if(!glfwInit()) {cerr << "glfwInit failed" << endl; exit();}

// open a window with GLFW
glfwWindowHint(GLFW_OPENGL_FORWARD_COMPAT, GL_TRUE);
glfwWindowHint(GLFW_OPENGL_PROFILE, GLFW_OPENGL_CORE_PROFILE);
glfwWindowHint(GLFW_CONTEXT_VERSION_MAJOR, 4);
glfwWindowHint(GLFW_CONTEXT_VERSION_MINOR, 2);
glfwWindowHint(GLFW_RESIZABLE, GL_TRUE);
MainWindow = glfwCreateWindow((int)SCREEN_SIZE.x, (int)SCREEN_SIZE.y,
    "Intro OpenGL with Shader", NULL, NULL);

if(!MainWindow) {cerr << "glfwOpenWindow failed" << endl; exit();}

// GLFW settings
glfwMakeContextCurrent(MainWindow);

// initialize GLEW
if(glewInit() != GLEW_OK) {cerr << "glewInit failed" << endl; exit(); }

// make sure OpenGL version 3.2 API is available
if(!GLEW_VERSION_4_2) {cerr << "OpenGL 4.2 API is not available." << endl; exit();}
```

# Load Shaders and Render

---

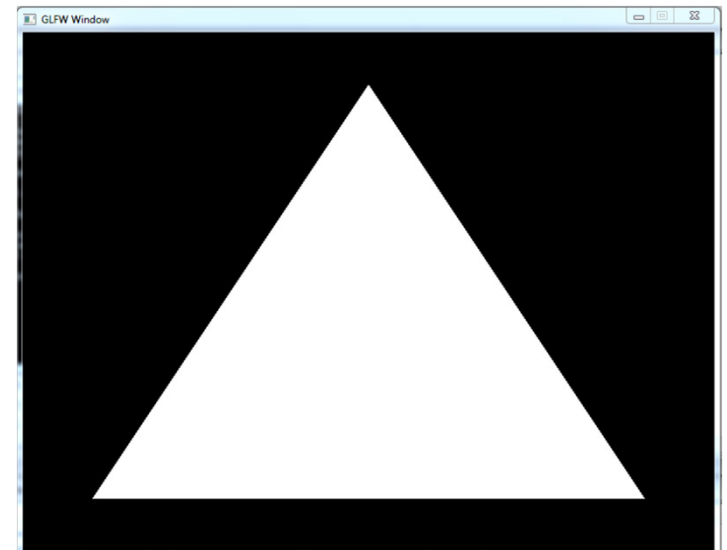
```
// load vertex and fragment shaders into opengl

LoadShaders();
if(!createShaderProgram())
{
    cerr << "Could not create the shaders";
}

// create buffer and fill it with the points of the triangle
LoadTriangle();

// run while the window is open
while(GLFW_GetWindowAttrib(window, GLFW_FOCUSED))
{
    while(!glfwWindowShouldClose(MainWindow))
    {
        // process pending events
        glfwPollEvents();
        // draw one frame
        Render(MainWindow);
    }

    // clean up and exit
    glfwTerminate();
}
```



# Lighting with GLSL

---

- ▶ Tutorial for diffuse lighting with a point light
  - ▶ <http://www.tomdalling.com/blog/modern-opengl/06-diffuse-point-lighting/>



# Tutorials and Documentation

---

- ▶ OpenGL Tutorials
  - ▶ <http://www.lighthouse3d.com/tutorials/>
  - ▶ <http://www.tomdalling.com/blog/category/modern-opengl/>
  - ▶ <http://www.swiftless.com/opengl4tuts.html>
- ▶ OpenGL and GLSL Specifications
  - ▶ <https://www.opengl.org/registry/>
- ▶ OpenGL 3.2 API Reference Card
  - ▶ [http://www.opengl.org/sdk/docs/reference\\_card/opengl32-quick-reference-card.pdf](http://www.opengl.org/sdk/docs/reference_card/opengl32-quick-reference-card.pdf)